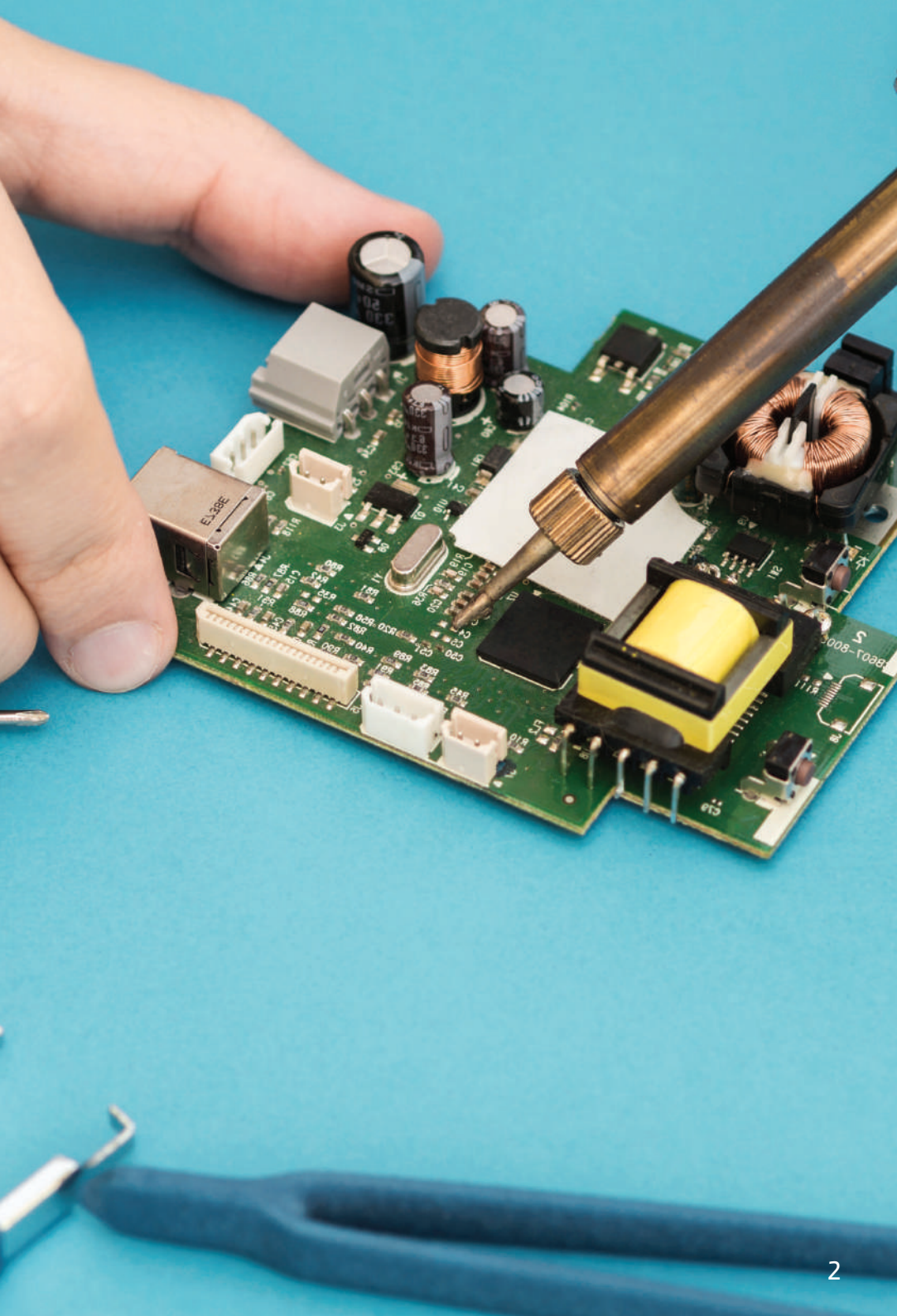


EMBERTON™
INVEST FOR YOUR GUEST.



CONTENTS

ABOUT US	3
VISION & MISSION STATEMENT	4
OUR DEVELOPMENT	5
OUR PHILOSOPHY	6
PROJECT REFERENCES	7-9
OUR SAFETY CERTIFICATIONS	10
BUILDING ON SUCCESS	11
INTELLECTUAL PROPERTY	12
OUR APPLIANCE LINES	13
DESIGN & DEVELOPMENT	14
PRODUCT & QUALITY CONTROL	15
GLOBAL DISTRIBUTION NETWORK	16



ABOUT US



35 years of expertise

Trusted in hotel rooms all over the world.

Emberton is a design and manufacturing company focused on providing electrical appliances and related products of the highest quality to the hotel and hospitality industries.

Emberton was established in London in the 1980's as a supplier of quality hotel products (to British hotels). Building upon the success in Europe, the company expanded its operations across Asia and the Middle East in the 1990's and now, a thoroughly international company, with operations and a client base spread across continents.

Emberton's suite of innovative, safe and superior quality electrical products has won the loyalty of customers across continents. Despite it's success, the brand maintains a relentless focus in finding new ways to create better and safer electrical products.

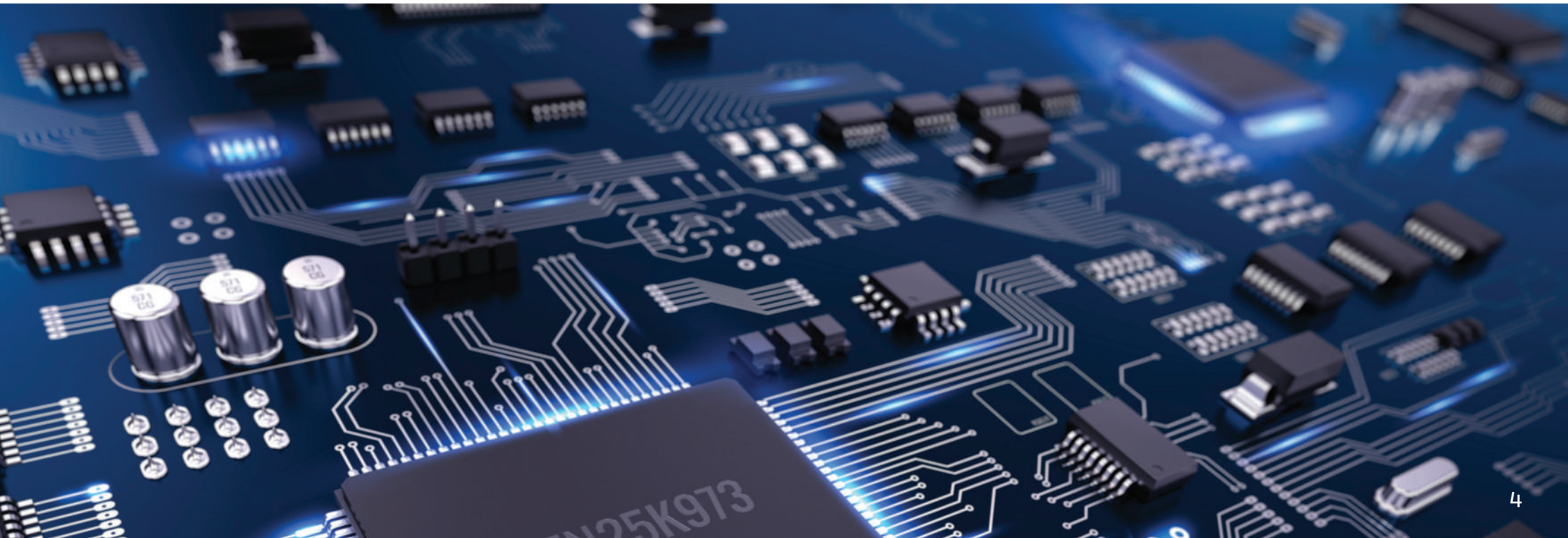
VISION & MISSION STATEMENT

“Investing in electrical engineering & technology to improve the safety, reliability & performance of electrical appliances worldwide”

Be the most competitive and efficient, supported by re-investment and commitment to training, research and quality control infrastructure.

Provide creative, innovative and robust guest products, featuring the latest available technology.

Provide an environment of continual growth, prosperity and improvement for employees, partners and shareholders, whilst ensuring mutual advancement, long term partnerships and benefit for clients and suppliers.



OUR DEVELOPMENT

Emberton - a tranquil English village where the founders were brought up.

1986

Emberton's pioneering year of supplying in-room hotel products in London, UK.

1995

Establishment of a distribution centre serving the European region, Emberton Europe BV in Rotterdam, Netherlands.

1996

Ventured in Asia with operations launched via Emberton Hong Kong and Malaysia.

2002

Strengthened presence in Asia with the incorporation of a technical base, testing, and inspection centre in Ningbo, China.

2010

Encouraging growth in North American market through Oasis Products LLC, USA, acting as Emberton's import centre.

2011

Solidifying technical capabilities through establishment of Emberton's Design & Engineering Centre in New Romney, Kent, United Kingdom.

Present

Successful ventures in 80 countries across all continents, with onward focus on innovation and constant pursuit for outstanding technology – efficiently under the Emberton brand.

OUR PHILOSOPHY

QUESTION EVERYTHING

We don't design for the hotel industry. We design with them. From initial design to final testing, we submit our products to a panel of experienced hotel and hospitality professionals.

Offering the lessons of decades in the industry, this panel ensures every last detail of every Emberton product is interrogated and questioned to deliver optimum performance.



The result is a suite of Emberton products built to meet the challenges of hotel staff and exceed the expectations of guests. Our Development and Production department have one rule.

'Question everything. Find new ways of making better products.'

PROJECT REFERENCES



Puro Hotel Group
Polski Holding Hotelowy Group
Resorty Górskie Group
Accor Hotel Group
Raddison Hotel Group
Intercontinental Warsaw
Marriott Warsaw
Bachleda Residence, Zakopane
Holiday Inn, Kensington
Ibis Style Hotel, Warszawa
Hyatt Place Heathrow Hotel, London
Ibis Style Hotel, Bucharest
Hampton by Hilton, Gdansk
Residence Inn, Kensington
Residence Inn London Bridge, Bermondsey
Puro Hotel Group, Warszawa
Hyatt Regency Hotel, Birmingham
Holiday Inn Hotel, Stratford
Arche Hotel Group, Warszawa
K West Hotel and Spa, London
Staybridge Suites, Stratford
Westin Warsaw
Marriott Sopot
Sofitel Sopot
Raffels Warsaw
Hyat Warsaw
Hilton Warsaw
Hilton Gdańsk
Diament Hotel Group, Katowice
Nosalowy Park, Zakopane
Starwood Apartment Earis Court, London
Staycity Apartment, Manchester
Novotel Hotel, Warszawa
Hampton by Hilton, Gdańsk

PGU Uzdrowiska, Polczyn Zdroj
Hidden Hotel, Paris
Green Mountain, Karpacz City
Best Western, Jurata
Hampton by Hilton, Lublin
Double Tree by Hilton, Warszawa
Sofitel Hotel, Warszawa
Radisson Red London Gatwick
Best Western Swiss Cottage Hotel
Knowsley Hall
Howletts & Port Lympne Estates Ltd
All Saints Hotel, Golf & Spa.
The Gantry London – Curio Collection by Hilton
Dao by Dorsett West London
The Reach at Picadilly – Molo Hotels
The Halyard at Ropeswalk Liverpool – Molo Hotels
Best Western Mornington Hotel
Holiday Inn York City Centre
Aparthotel Birmingham
Hilton by Hampton Nuneaton
Dorsett Hotel Canary Wharf
Dorsett Hotel Shepherds Bush
The Londoner Hotel
Holiday Inn Stratford
Staybridge Suites Stratford
Hyatt Place London Heathrow
Hyatt Regency Birmingham
Starwood Apartments, Earls Court London
Residence Inn London Bridge
Residence Inn Kensington
Holiday Inn Kensington High Street

PROJECT REFERENCES

Taal Vista Hotel SM
Pico Sands SM
Quest Clark
Le Meridien Hong Kong
Harbour Grand Kowloon
The Fullerton Ocean Park Hotel Hong Kong
Dorsett Tsuen Wan, Hong Kong
ARCA
Royal Park Hotel
Crimson Hotel, Mactan, Philipines
Courtyard by Marriot, Penang
Sofitel Saigon Plaza, Ho Chi Minh
Hilton Opera Hanoi
The Parisian Macao
Londoner Macao, Cotai Strip
W Hotel, Kuala Lumpur
Swiss Garden Hotel Group, Kuala Lumpur
Sands Macao, Largo de Monte Carlo
InternContinental Saigon, Ho Chi Minh
Resort World, Genting Highlands
Four Points Hotel, Penang
Rosewood Hong Kong, Tsimshatsui
F1 Hotel BGC, Metro Manila
Renaissance Riverside Saigon, Ho Chi Minh
JW Marriott Hanoi
Travelodge Hotel, Penang
Grand Lapa Macao
EQ Hotel, Kuala Lumpur
Movenpick Hotel, Kuala Lumpur
Grand Millenium Hotel, Kuala Lumpur
InterContinental Phu Quoc Long Beach Resort,
Phu Quoc
Grand Hyatt Macao
Melia Hotel, Kuala Lumpur
Parkroyal Group of Hotels, Kuala Lumpur
Intercontinental Hotel, Kuala Lumpur
Villa Gold 3+4, Ninh Binh
Caravelle Saigon Hotel, Ho Chi Minh
Ocean Villas_Danang, Danang
Doubletree Hotel, Kuala Lumpur
Inside By Melia Saigon, Ho Chi Minh
Kerry Hotel, Hung Hom
Novotel Ha Long, Quang Ninh
Hilton Hotel, Kuala Lumpur
Pulman Hotel, Kuala Lumpur
Dusit Princess Moonrise Phu Quoc, Phu Quoc
Grand Dorset Hote, Kuala Lumpur
L'Azure Resort and Spa, Phu Quoc
Hanoi Hotel, Hanoi
Crimson Alabang, Cebu

Conrad Hong Kong, Admiralty
Four Seasons, Macao
Ovolo Group, Central
Four Points Chinatown, Kuala Lumpur
Wolo Hotel, Kuala Lumpur
Crowne Plaza Fudan, Shanghai
St. Regis Hong Kong
Quest Hotel, Cebu
Traders Hotel, Kuala Lumpur
Axia South Cikarang (TOYOTA)
Sima Hotel, Sumba
Aston Cilegon Boutique Hotel
Citadines Gatot Subroto, Jakarta
Fairfield by Marriott Hotel Airport, Jakarta
Gran Melia Hotel, Jakarta
Harris Hotel, Cibinong
Hurun Beach Marriot Hotel, Lampung
Ibis Style Hotel, BSD
Intercontinental, Jakarta Pondok Indah
Laksa Hotel & Resort, Ciletuh
Laksa Hotel, Subang
Marriott Hotel, Jakarta
Mercure, Jakarta Pantai Indah Kapuk
Neo Puri Indah Hotel - Jakarta
Pop! Hotel Stasiun, Kota Surabaya
Proyek Hotel Santika, Lahat
Rez Hotel, Semarang
Ritz Carlton Pacific Place
Santika Hotel Nagrak
Somerset Grand Citra, Jakarta
The Ascott Hotel, Jakarta
Vivere - South 78
Whiz Luxe Hotel Spazio, Surabaya
Grand Metro Hotel
Moxy Hotel, Solo
Oakwood Premier Cozmo, Jakarta
Doubletree by Hilton, Bintaro
Sheraton Surabaya Hotel & Towers
Artotel Hotel Gelora Senayan, Jakarta
Wyndham Garden Hotel, Yogyakarta
Santika Hotel, Sukabumi
Aston Sentul Lake Resort & Conference Center
Voco Hotel, Bandung
Mercure Hotel, Berau
Villa Ring 1, Samarinda
Indigo Hortal, Bandung
Movenpick, Boracay
Manila Hotel
Manila Prince Hotel



PROJECT REFERENCES

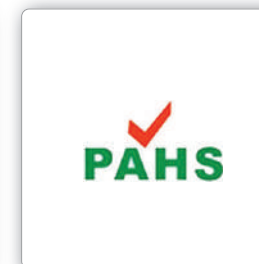
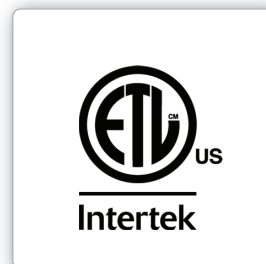
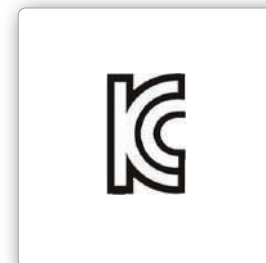
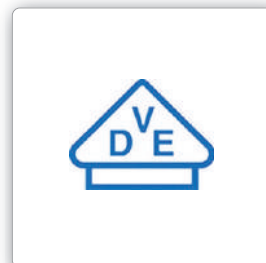
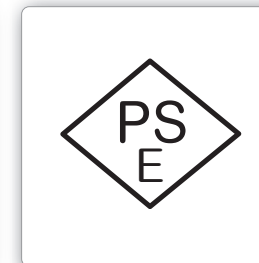
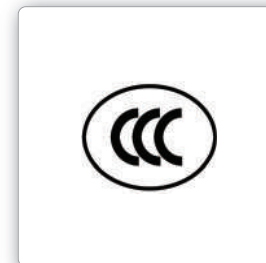
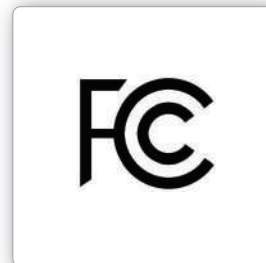
Mina Hotel and Residences
Dusit Hotel & Suites
NH Hotels
Towers Rotana
Rotana Navitas
Hyatt Centric
St.Regis Polo, Dubai
Bulgari Hotel, Dubai
Heritance - Ahungalle
Armani Hotel, Dubai
Mahaweli Rach - Colombo
Heritance - kandalama
Grand Hyatt, Muscat
St Regis Hotel, Dubai
Westin Hotel, Dubai
W Hotel, Dubai
Cinnamon Wild Yala
Five Hotels, Dubai
Heritance Tea Factory
Crowne Plaza, Doha
Cinnamon Lodge Habarana
Eden Resort & Spa
Ranna 212
Golden Pearl Hotel
98 Acres
Heritance - Negombo
Gateway by Taj
Kingsbury - Colombo
Pyramid Continental Hotel, Juba, Sudan
Holiday Inn - The Business Park, Doha
Kempinski Gold Coast City, Ghana
Crowne Plaza Doha - The Business Park
Holiday Inn Doha - The Business Park

Trinco Blue by Cinnamon
Metropolitan Hotel, Dubai
Millennium Place, Dubai
Cinnamon Lakeside - Colombo
Habtoor Grand, Dubai
Earl's Regency, Kandy
Cinnamon Bey Beruwala
Intercontinental, Doha
Airport Garden Hotel, Colombo
Ellaidhoo by Cinnamon, Maldives
Viceroy Palm Hotel, Dubai
Waldorf Astoria Palm, Dubai
Four Seasons, Karnataka
Crowne Plaza Hotel, Dubai
Cinnoman Grand - Colombo
Heritance Ayurveda
Hikka Tranz by Cinnamon
Dukes Dubai
Habarana Village by Cinnamon
Swiss-Bellin, Muscat
Sigiri Jungle
Jumeirah Marasa Al Arab
Waldorf Astoria Palm
Aloft
Element



OUR SAFETY CERTIFICATIONS

SAFETY IS OUR PRIORITY
World Standards



BUILDING ON SUCCESS

Growing The Global Brand

Emberton's growth has been an incredible story. The drive and desire to be better, for perpetual improvement, remains part of Emberton's DNA.

From training, to production and testing facilities, we continually re-invest in our people and our products. Relying on the principles and energy that have driven the brand's success so far, Emberton looks to the future with full of confidence.



INTELLECTUAL PROPERTY



TOUGH BOARD - Rugged & Durable; We have combined a rugged frame with heavy duty metal components and robotic welds to withstand guests' tough use.



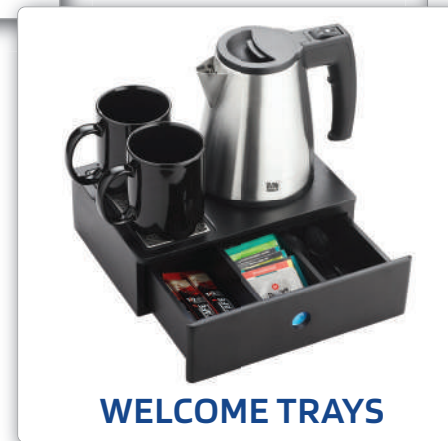
DUAL SAFE - an organic, thermo-sensitive material, remarkably sensitive to abnormally high temperatures. Upon sensing critical heat levels, DUAL SAFE activates and the electrical current will be interrupted immediately and permanently.



WATER TANK TECHNOLOGY - Special anti-fracture water tank welding technique ensures a permanent seal to prevent water leakage.

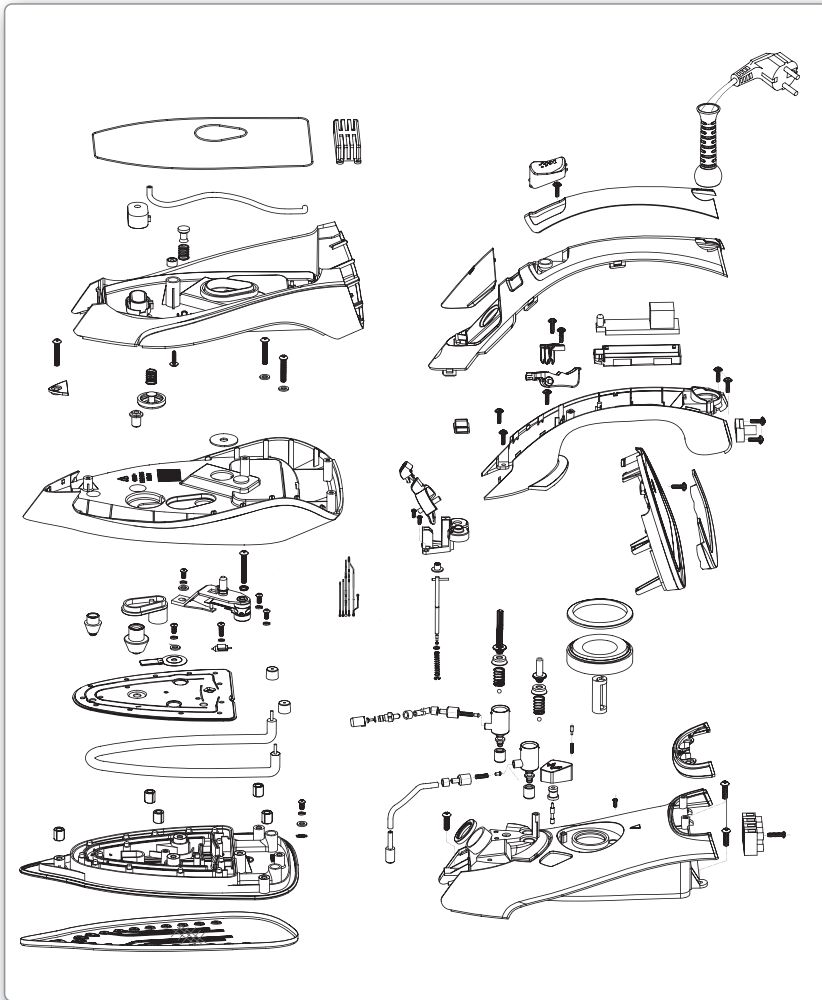
OUR APPLIANCE LINES

Product Examples:

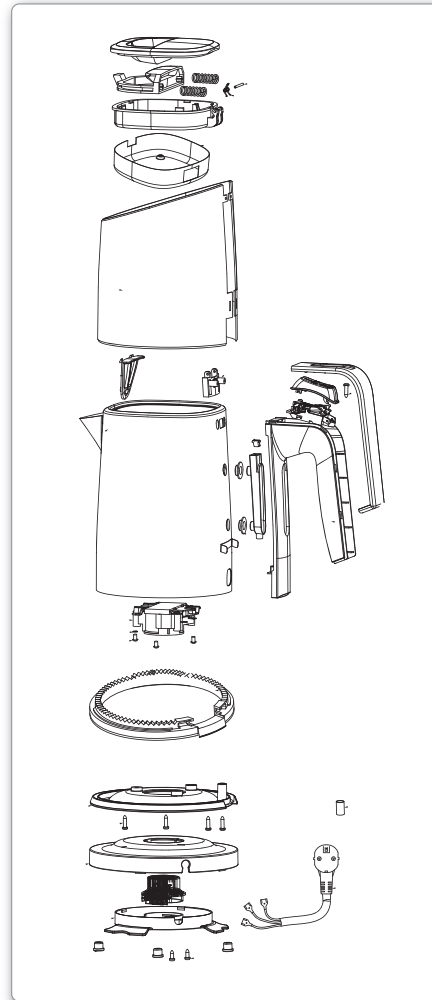


DESIGN & DEVELOPMENT

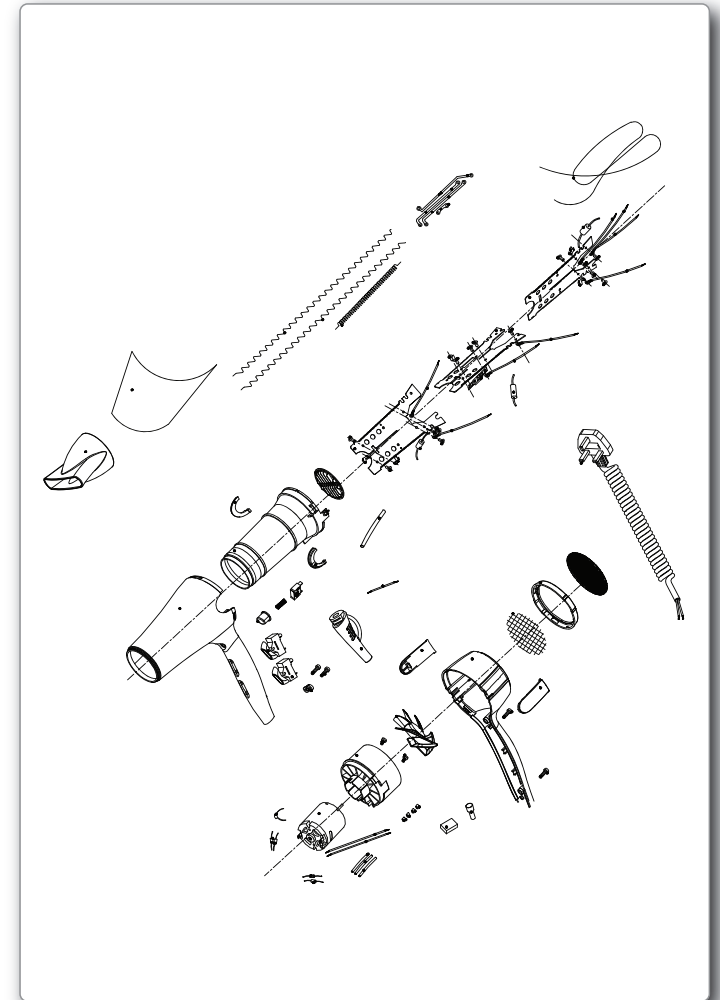
STEAM IRON



KETTLE



HAIRDRYER



PRODUCT & QUALITY CONTROL

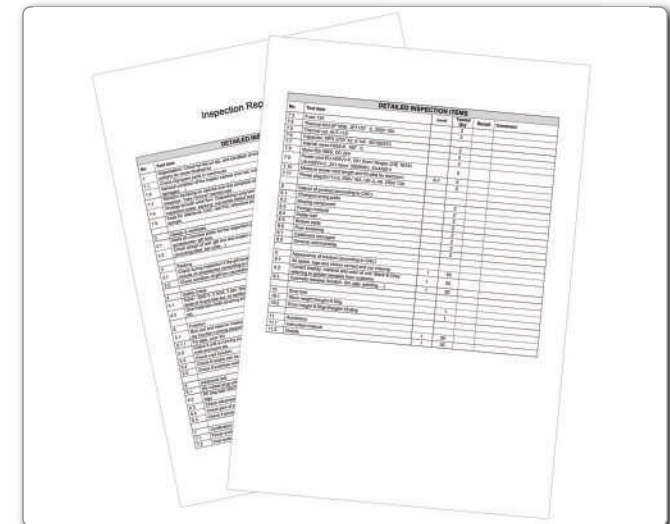
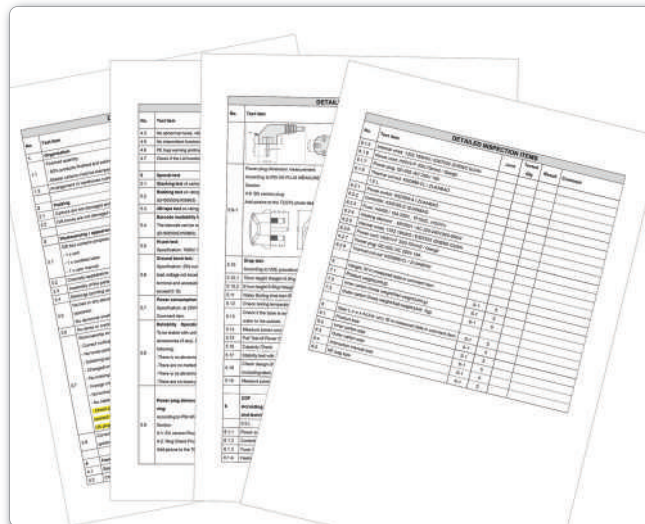
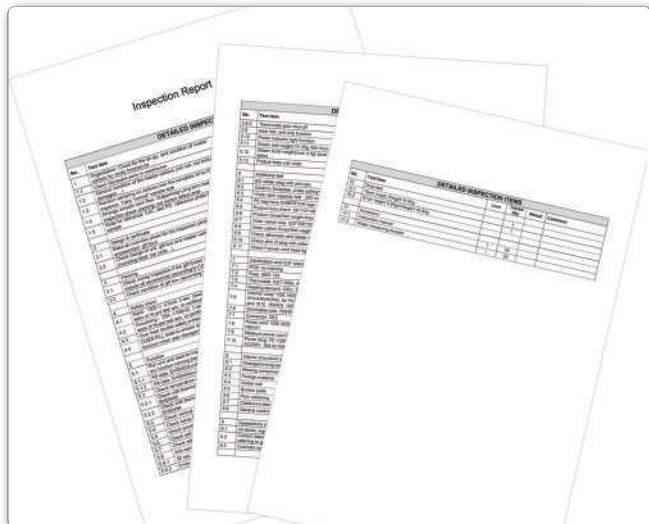
STEAM IRONS



KETTLES



HAIRDRYERS



GLOBAL DISTRIBUTION NETWORK



- EMBERTON OPERATION CENTRES
- AUTHORISED FULFILMENT CENTRES

CONTACTS

United Kingdom

Mountfield House, Mountfield Industrial Estate,
Mountfield Road, New Romney, Kent TN28 8LH,
England, United Kingdom.
Tel: +44 1797 361256 Fax: +44 01797 366722

Czech

Za Tratí 235, Chrástany, 252 19 Czech Republic
Building C, ramp number 20
Tel. +420 727 888 170

Germany

Beuelsweg 9
50733 Köln, Deutschland
TEL. +49 221 2594 3342

UAE

SAIF Executive Office P8-06-34, Sharjah U.A.E.
P.O Box 513001, Sharjah, U.A.E
Tel. +971 56 260 6640

Poland

ul. Poematu 6/101
04-993 Warszawa
Poland
Tel. +48 22 299 29 16

China

ZhongYang DaSha 19 # Shuimen South Road Cixi,
Ningbo, China PC
Tel: +86 574 63202931

Hong Kong

Suite 811, Tsimshatsui Centre, East Wing,
66 Mody Road TST East Kowloon,
Hong Kong
Tel: +852 2268 6888 Fax: +852 2721 3881

Malaysia

19, Medan Istana 2, Bandar Ipoh Raya,
30000 Ipoh, Perak, Malaysia
Tel: +6 05 242 5707 Fax: +6 05 242 5481
E-mail: info@emberton.com

EMBERTON™

www.emberton.com
info@emberton.com